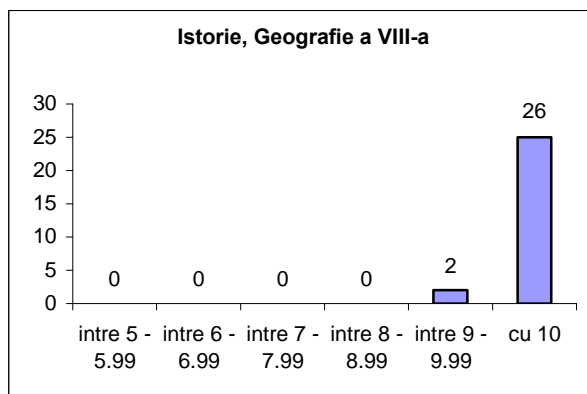
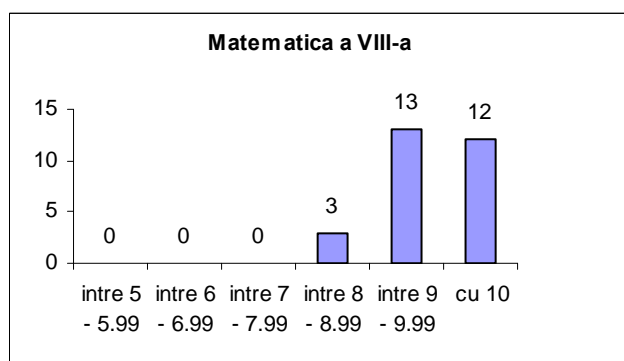
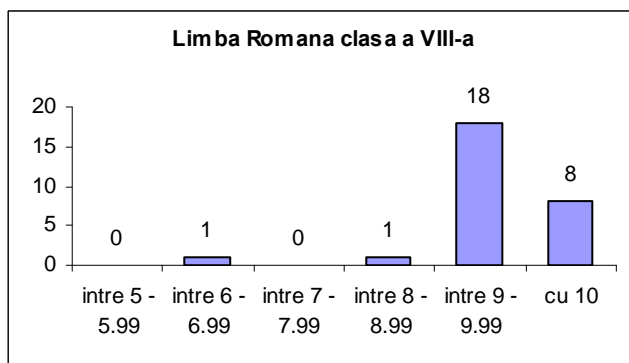


**SITUATIA LA TEZELE CU SUBIECT UNIC
SEMESTRUL I
AN ȘCOLAR 2008-2009**

	Proba clasa a VIII - a	Inscrisi	Absenti	Reusiti	din care cu note:					
					intre 5 - 5.99	intre 6 - 6.99	intre 7 - 7.99	intre 8 - 8.99	intre 9 - 9.99	cu 10
1	Limba romana	28	0	28	0	1	0	1	18	8
2	Istorie / Geografie	28	0	28	0	0	0	0	2	26
3	Matematica	28	0	28	0	0	0	3	13	12

	Proba clasa a VIII - a	Inscrisi	Absenti	Reusiti	din care cu note:					
					intre 5 - 5.99	intre 6 - 6.99	intre 7 - 7.99	intre 8 - 8.99	intre 9 - 9.99	cu 10
1	Limba romana	28	0	28	0.00%	3.57%	0.00%	3.57%	64.29%	28.57%
2	Istorie / Geografie	28	1	28	0%	0%	0%	0%	6%	94%
3	Matematica	28	0	28	0%	0%	0%	11%	46%	43%



**SITUATIA LA TEZELE CU SUBIECT UNIC
SEMESTRUL II
AN ȘCOLAR 2008-2009**

	Proba clasa a VIII - a	Inscrisi	Absenti	Reusiti	din care cu note:					
					intre 5 - 5.99	intre 6 - 6.99	intre 7 - 7.99	intre 8 - 8.99	intre 9 - 9.99	cu 10
1	Limba romana	28	0	28	0	0	1	5	12	10
2	Istorie / Geografie	28	0	28	0	0	0	0	1	27
3	Matematica	28	0	28	0	0	3	6	8	11

	Proba clasa a VIII - a	Inscrisi	Absenti	Reusiti	din care cu note:					
					intre 5 - 5.99	intre 6 - 6.99	intre 7 - 7.99	intre 8 - 8.99	intre 9 - 9.99	cu 10
1	Limba romana	28	0	28	0,00%	0,00%	3,57%	17,86%	42,86%	35,71%
2	Istorie / Geografie	28	0	28	0%	0%	0%	0%	4%	96%
3	Matematica	28	0	28	0%	0%	11%	21%	29%	39%

